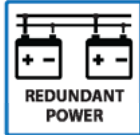


**8-PORT UNMANAGED ETHERNET SWITCH WITH 8x10/100/1000BASE-TX****UNMANAGED ETHERNET SWITCH****FEATURES**

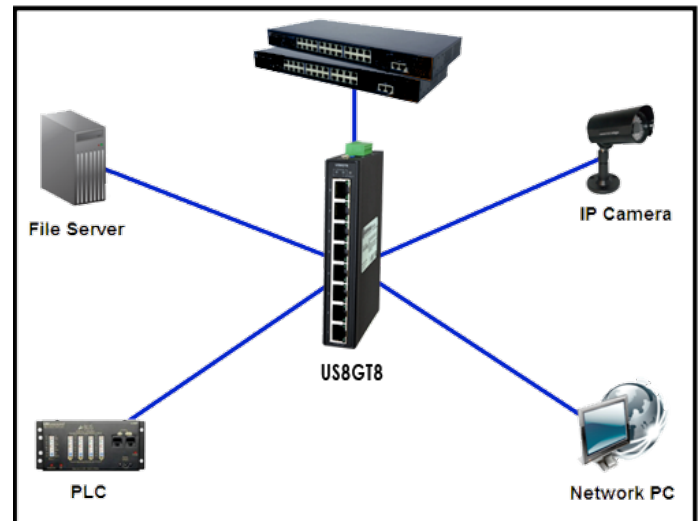
- Supports 8 ports 10/100/1000 Base-TX
- Supports auto-negotiation and auto-MDI/MDI-X
- Supports store and forward transmission
- Supports flow control
- Compact size for easily installation
- Supports Jumbo Frame up to 9K Bytes
- Rugged IP-30 housing design
- DIN-Rail or wall mounting
- Redundant power supply capability for enhanced reliability

**DESCRIPTION**

The US8GT8 is an unmanaged Ethernet switch with 8x10/100/1000 Base-TX ports. Its rugged IP-30 housing design and wide operating temperature range (-40 to +75°C) enables it to operate in even the extreme environments. The US8GT8 can be used to connect several Ethernet devices such as Ethernet I/O, IP-Cameras or other Ethernet switches. Its small size makes it convenient to mount in almost any location.

**TYPICAL OPERATION**

As shown in the diagram the US8GT8 can be used to connect several Ethernet devices such as Ethernet devices, IP Cameras and other Ethernet switches.



## SPECIFICATIONS

| Physical Ports                                 |  |
|--|--|
| 10/100/1000Base-TX Ports in RJ45 Auto MDI/MDIX | 8  |
| Technology                                     |  |
| Ethernet Standards                             | IEEE 802.3 for 10Base-T, IEEE 802.3u for 100Base-TX<br>IEEE 802.3ab for 1000Base-X<br>IEEE 802.3x for Flow Control |
| MAC Table                                      | 2048 MAC addresses   |
| Processing                                     | Store-and-Forward  |
| LED indicators                                 |  |
| Power indicator                                | Green : Power LED x 2  |
| Fault indicator                                | Amber : Indicate PWR1 or PWR2 failure  |
| 10/100/1000Base-TX RJ45 port                   | Green for port Link/Act.   |
| DIP-Switch                                     |  |
| DIP-Switch 1                                   | Power-1 failed warning : (ON) enable, (OFF) disable  |
| DIP-Switch 2                                   | Power-2 failed warning : (ON) enable, (OFF) disable  |
| Fault contact                                  |  |
| Relay  | Relay output to carry capacity of 1A at 24VDC  |
| Power  |  |
| Redundant Input power                          | Dual DC inputs. 12 ~ 48VDC on 6-pin terminal block.  |

| Power consumption (Typ.)    | 8 Watts (typ)  |
|-----------------------------|--|
| Overload current protection | Yes  |
| Reverse polarity protection | No   |
| Physical Characteristic     |  |
| Enclosure                   | IP-30  |
| Dimension (W x D x H)       | 26.1 (W) x 94.9 (D) x 144.3(H) mm (1.03 x 3.74 x 5.68 inch)  |
| Weight (g)                  | 390 g (0.86 lb)  |
| Environmental               |  |
| Storage Temperature         | -40 to 85°C (-40 to 185°F)   |
| Operating Temperature       | -40 to 75°C (-40 to 168°F)   |
| Operating Humidity          | 5% to 95% Non-condensing   |
| Regulatory approvals        |  |
| EMI                         | FCC Part 15, CISPR (EN55022) class A   |
| EMS                         | EN61000-4-2 (ESD), EN61000-4-3 (RS), EN61000-4-4 (EFT), EN61000-4-5 (Surge), EN61000-4-6 (CS), EN61000-4-8, EN61000-4-11 |
| Shock                       | IEC60068-2-27  |
| Free Fall                   | IEC60068-2-32  |
| Vibration                   | IEC60068-2-6   |
| Safety                      | EN60950-1  |

| Ordering Information |                   |   |
|----------------------|-------------------|---|
| Products             | Part Number       | Description   |
|                      | <b>US8GT8</b>     | <b>8-port unmanaged Ethernet switch with 8x10/1000Base-TX</b> |
| Power supplies       | <b>PSH24DC24</b>  | <b>24VDC @ 1 Amp ( 24 Watts)</b>                              |
|                      | <b>PSH24DC40</b>  | <b>24VDC @ 1.7 Amps ( 40 Watts)</b>                           |
|                      | <b>PSH48DC240</b> | <b>48VDC @ 5 Amp Amps ( 240 Watts)</b>                        |
|                      | <b>PSH48DC480</b> | <b>48VDC @ 10 Amp Amps ( 480 Watts)</b>                       |

| Packing List                    |          |
|---------------------------------|----------|
| <b>US8GT8</b>                   | <b>1</b> |
| <b>Wall-Mount Kit</b>           | <b>1</b> |
| <b>Quick Installation Guide</b> | <b>1</b> |
| <b>Din-Rail Kit (attached)</b>  | <b>1</b> |