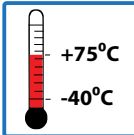
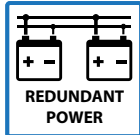


5-PORT UNMANAGED ETHERNET SWITCH WITH 5x10/100BASE-TX**UNMANAGED ETHERNET SWITCH****FEATURES**

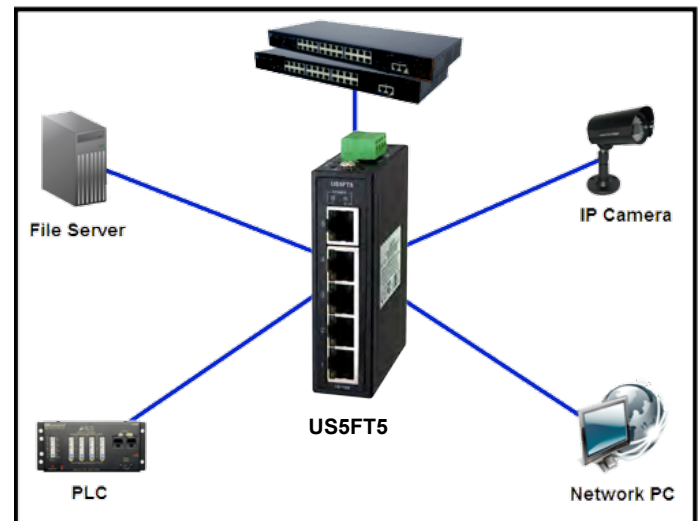
- Supports 5 ports 10/100 Base-TX
- Supports auto-negotiation and auto-MDI/MDI-X
- Supports store and forward transmission
- Supports flow control
- Compact size for easily installation
- Rugged IP-30 housing design
- DIN-Rail or wall mounting
- Redundant power supply capability for enhanced reliability

DESCRIPTION

The US5FT5 is an unmanaged Ethernet switch with 5x10/100 Base-TX ports. Its rugged IP-30 housing design and wide operating temperature range (-40 to +75°C) enables it to operate in even the extreme environments. The US5FT5 can be used to connect several Ethernet devices such as Ethernet I/O, IP-Cameras or other Ethernet switches. Its small size makes it convenient to mount in almost any location.

TYPICAL OPERATION

As shown in the diagram the US5FT5 can be used to connect several Ethernet devices such as Ethernet devices, IP Cameras and other Ethernet switches.



SPECIFICATIONS

| Physical Ports | | Physical Characteristic | |
|--|---|-------------------------|--|
| 10/100 Base-TX Ports in RJ45 Auto MDI/MDIX | 5 | Enclosure | IP-30 |
| Technology | | Dimension (W x D x H) | 26.1 (W) x 70 (D) x 95 (H)mm (1.03 x 2.76 x 3.74 inch) |
| Ethernet Standards | IEEE 802.3 for 10Base-T IEEE 802.3u for 100Base-TX IEEE 802.3x for Flow control | Weight (g) | 205 g (0.5 lb) |
| MAC Table | 2048 MAC address | Environmental | |
| Processing | Store-and-Forward | Storage Temperature | -40 to 85°C (-40 to 185°F) |
| LED indicators | | Operating Temperature | -40 to 75°C (-40 to 168°F) |
| Power Indicator | Green : Power LED x 2 | Operating Humidity | 5% to 95% Non-condensing |
| 10/100Base-TX RJ45 Port Indicator | Green for port Link/Act. Amber for Duplex/ Collision. | Regulatory approvals | |
| Power | | EMI | FCC Part 15, CISPR (EN55022) class A |
| Input Power | Dual 12~48 VDC voltage power input on 4-pin terminal block | EMS | EN61000-4-2 (ESD), EN61000-4-3 (RS), EN61000-4-4 (EFT), EN61000-4-5 (Surge), EN61000-4-6 (CS), EN61000-4-8, EN61000-4-11 |
| Power Consumption (Typ.) | 3 Watts | Shock | IEC60068-2-27 |
| Overload Current Protection | Yes | Free Fall | IEC60068-2-32 |
| Reverse Polarity Protection | Yes | Vibration | IEC60068-2-6 |
| | | Safety | EN60950-1 |

| Ordering Information | | |
|----------------------------|------------------|--|
| Products | Part Number | Description |
| | US5FT5 | 5-port unmanaged Ethernet switch with 5x10/100Base-TX |
| Recommended Power supplies | PSH24DC24 | 24VDC @ 1 Amp (24 Watts) |
| | PSH48DC40 | 48VDC @ 0.83 Amps (38.9 Watts) |

| Packing List | |
|---------------------------------|----------|
| US5FT5 | 1 |
| Wall-Mount Kit | 1 |
| Quick Installation Guide | 1 |
| Din-Rail Kit (attached) | 1 |