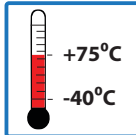
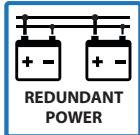


8-PORT UNMANAGED ETHERNET SWITCH WITH 8x10/100/1000BASE-TX

UNMANAGED ETHERNET SWITCH
FC CE

FEATURES

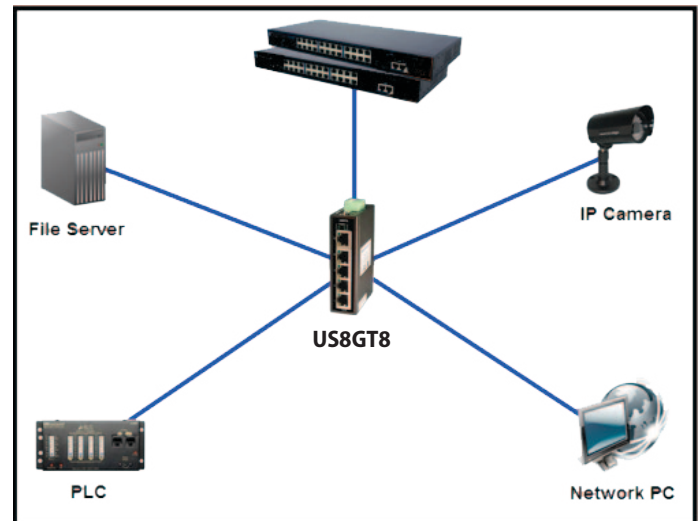
- Supports 8 ports 10/100/1000 Base-TX
- Supports auto-negotiation and auto-MDI/MDI-X
- Supports store and forward transmission
- Supports flow control
- Compact size for easily installation
- Supports Jumbo Frame up to 9K Bytes
- Rugged IP-30 housing design
- DIN-Rail or wall mounting
- Redundant power supply capability for enhanced reliability

DESCRIPTION

The US8GT8 is an unmanaged Ethernet switch with 8x10/100/1000 Base-TX ports. Its rugged IP-30 housing design and wide operating temperature range (-40 to +75°C) enables it to operate in even the extreme environments. The US8GT8 can be used to connect several Ethernet devices such as Ethernet I/O, IP-Cameras or other Ethernet switches. Its small size makes it convenient to mount in almost any location.

TYPICAL OPERATION

As shown in the diagram the US8GT8 can be used to connect several Ethernet devices such as Ethernet devices, IP Cameras and other Ethernet switches.



SPECIFICATIONS

Physical Ports	
10/100/1000Base-TX Ports in RJ45 Auto MDI/MDIX	8
Technology	
Ethernet Standards	IEEE 802.3 for 10Base-T, IEEE 802.3u for 100Base-TX IEEE 802.3ab for 1000Base-X IEEE 802.3x for Flow Control
MAC Table	2048 MAC addresses
Processing	Store-and-Forward
LED indicators	
Power indicator	Green : Power LED x 2
Fault indicator	Amber : Indicate PWR1 or PWR2 failure
10/100/1000Base-TX RJ45 port	Green for port Link/Act.
DIP-Switch	
DIP-Switch 1	Power-1 failed warning : (ON) enable, (OFF) disable
DIP-Switch 2	Power-2 failed warning : (ON) enable, (OFF) disable
Fault contact	
Relay	Relay output to carry capacity of 1A at 24VDC
Power	
Redundant Input power	Dual DC inputs. 12 ~ 48VDC on 6-pin terminal block.

Power consumption (Typ.)	8 Watts (typ)
Overload current protection	Yes
Reverse polarity protection	No
Physical Characteristic	
Enclosure	IP-30
Dimension (W x D x H)	26.1 (W) x 94.9 (D) x 144.3(H) mm (1.03 x 3.74 x 5.68 inch)
Weight (g)	390 g (0.86 lb)
Environmental	
Storage Temperature	-40 to 85°C (-40 to 185°F)
Operating Temperature	-40 to 75°C (-40 to 168°F)
Operating Humidity	5% to 95% Non-condensing
Regulatory approvals	
EMI	FCC Part 15, CISPR (EN55022) class A
EMS	EN61000-4-2 (ESD), EN61000-4-3 (RS), EN61000-4-4 (EFT), EN61000-4-5 (Surge), EN61000-4-6 (CS), EN61000-4-8, EN61000-4-11
Shock	IEC60068-2-27
Free Fall	IEC60068-2-32
Vibration	IEC60068-2-6
Safety	EN60950-1

Ordering Information

Products	Part Number	Description
	US8GT8	8-port unmanaged Ethernet switch with 8x10/1000Base-TX
Power supplies	PSH24DC24	24VDC @ 1 Amp (24 Watts)
	PSH24DC40	24VDC @ 1.7 Amps (40 Watts)
	PSH48DC240	48VDC @ 5 Amp Amps (240 Watts)
	PSH48DC480	48VDC @ 10 Amp Amps (480 Watts)

Packing List

US8GT8	1
Wall-Mount Kit	1
Quick Installation Guide	1
Din-Rail Kit (attached)	1