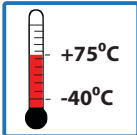
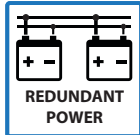


**5-PORT UNMANAGED ETHERNET SWITCH WITH 5x10/100BASE-TX**

**UNMANAGED ETHERNET SWITCH**
**FC CE**

**FEATURES**

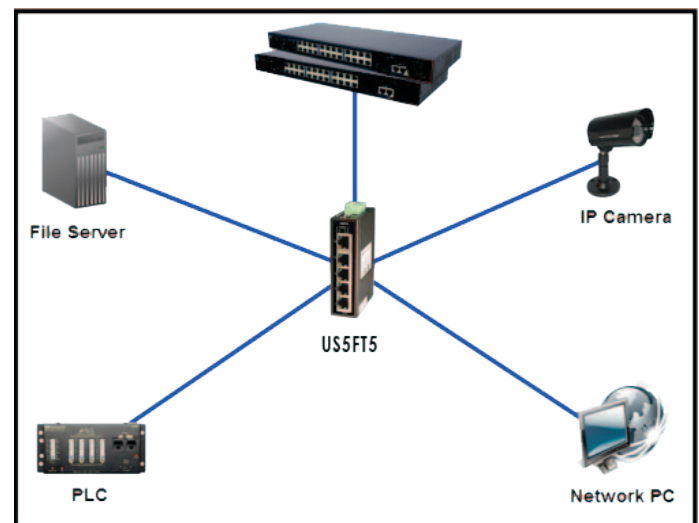
- Supports 5 ports 10/100 Base-TX
- Supports auto-negotiation and auto-MDI/MDI-X
- Supports store and forward transmission
- Supports flow control
- Compact size for easily installation
- Rugged IP-30 housing design
- DIN-Rail or wall mounting
- Redundant power supply capability for enhanced reliability

**DESCRIPTION**

The US5FT5 is an unmanaged Ethernet switch with 5x10/100 Base-TX ports. Its rugged IP-30 housing design and wide operating temperature range (-40 to +75°C) enables it to operate in even the extreme environments. The US5FT5 can be used to connect several Ethernet devices such as Ethernet I/O, IP-Cameras or other Ethernet switches. Its small size makes it convenient to mount in almost any location.

**TYPICAL OPERATION**

As shown in the diagram the US5FT5 can be used to connect several Ethernet devices such as Ethernet devices, IP Cameras and other Ethernet switches.



## SPECIFICATIONS

Physical Ports		Physical Characteristic	
10/100 Base-TX Ports in RJ45 Auto MDI/MDIX	<b>5</b>	Enclosure	IP-30
Technology		Dimension (W x D x H)	26.1 (W) x 70 (D) x 95 (H)mm (1.03 x 2.76 x 3.74 inch)
Ethernet Standards	IEEE 802.3 for 10Base-T IEEE 802.3u for 100Base-TX IEEE 802.3x for Flow control	Weight (g)	205 g (0.5 lb)
MAC Table	2048 MAC address	Environmental	
Processing	Store-and-Forward	Storage Temperature	-40 to 85°C (-40 to 185°F)
LED indicators		Operating Temperature	-40 to 75°C (-40 to 168°F)
Power Indicator	Green : Power LED x 2	Operating Humidity	5% to 95% Non-condensing
10/100Base-TX RJ45 Port Indicator	Green for port Link/Act. Amber for Duplex/ Collision.	Regulatory approvals	
Power		EMI	FCC Part 15, CISPR (EN55022) class A
Input Power	Dual 12~48VDC voltage power input on 4-pin terminal block	EMS	EN61000-4-2 (ESD), EN61000-4-3 (RS), EN61000-4-4 (EFT), EN61000-4-5 (Surge), EN61000-4-6 (CS), EN61000-4-8, EN61000-4-11
Power Consumption (Typ.)	3 Watts	Shock	IEC60068-2-27
Overload Current Protection	Yes	Free Fall	IEC60068-2-32
Reverse Polarity Protection	Yes	Vibration	IEC60068-2-6
		Safety	EN60950-1

### Ordering Information

Products	Part Number	Description
	<b>US5FT5</b>	<b>5-port unmanaged Ethernet switch with 5x10/100Base-TX</b>
Power supplies	<b>PSH24DC24</b>	<b>24VDC @ 1 Amp ( 24 Watts)</b>
	<b>PSH24DC40</b>	<b>24VDC @ 1.7 Amps ( 40 Watts)</b>
	<b>PSH48DC240</b>	<b>48VDC @ 5 Amp Amps ( 240 Watts)</b>
	<b>PSH48DC480</b>	<b>48VDC @ 10 Amp Amps ( 480 Watts)</b>

### Packing List

<b>US5FT5</b>	<b>1</b>
<b>Wall-Mount Kit</b>	<b>1</b>
<b>Quick Installation Guide</b>	<b>1</b>
<b>Din-Rail Kit (attached)</b>	<b>1</b>